

CITATION

residential design

MOORE, LYNDON,
TURNBULL, WHITAKER,
ARCHITECTS

EDWARD B. ALLEN, ASSOCIATE

LAWRENCE HALPRIN
& ASSOCIATES,
LANDSCAPE ARCHITECTS

DAVIS & MORREAU,
STRUCTURAL ENGINEERS

SARLES, BRELJE & RACE,
CIVIL ENGINEERS

RICHARD CHYLINSKI,
WIND TUNNEL STUDIES

PROJECT: Condominium on the Sea
Ranch, Gualala, California, for Oceanic
Properties, Inc.

SITE: 5000-acre sheep ranch north of San
Francisco, bordering 10 miles of pic-
turesque coastline.

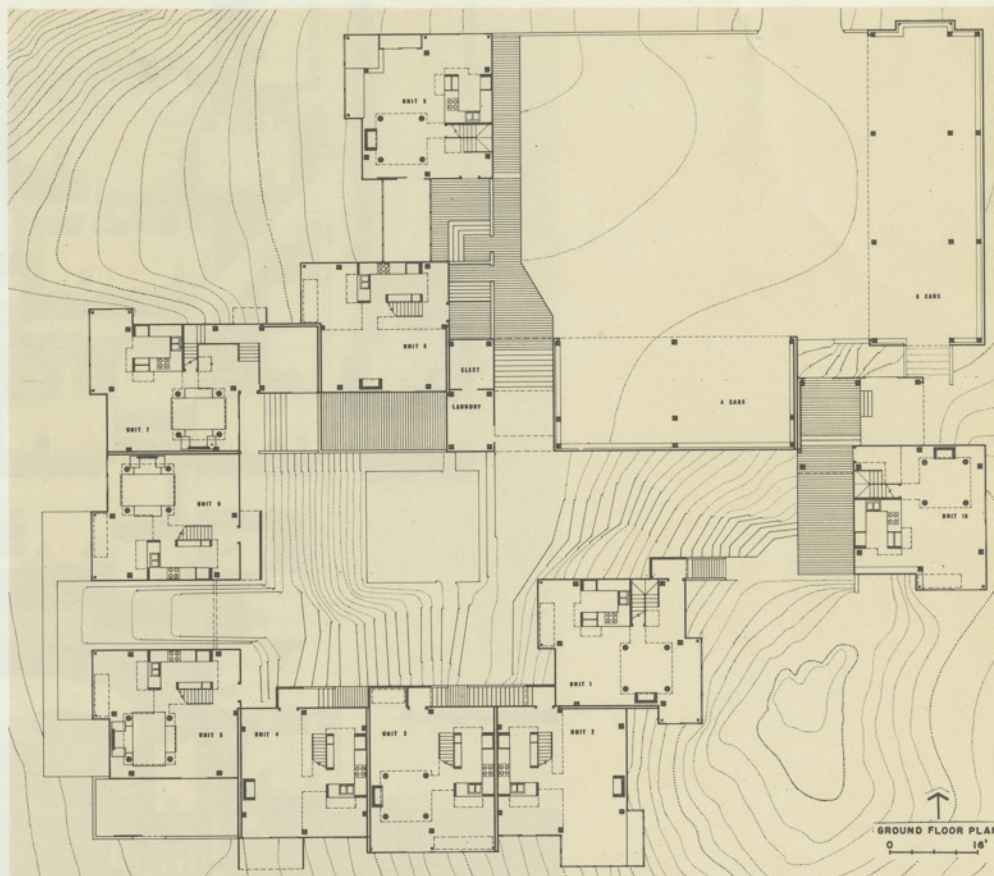
PROGRAM REQUIREMENTS: To develop the
site for vacation houses without destroy-
ing its natural beauty. Thirty-five acres
between road and sea to have condo-
minium units.

DESIGN SOLUTION: Living units are tightly
clustered, so as to leave most of the site
open. Ten units—each a 24-ft cube—
are to be built first to serve as a model
for subsequent clusters. Cars are parked
around a walled compound, and units
closely packed around a wind-protected
courtyard. Some have private gardens or
greenhouses and all face the coastal
panorama as well. There are few open-
ings in the houses, except for numerous
skylights that serve to admit as much
sunlight as possible. Bay windows, ter-
races, decks and walled gardens are all
outside the basic cube.

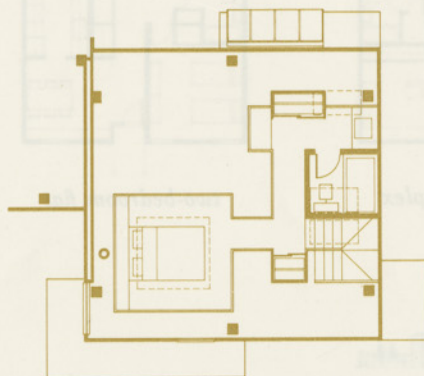
Within the cube, the architects sought
“to make powerful and exciting spaces,”
appropriate for a holiday and consciously
distinct from the familiar home, but
“with a strong sense of enclosure . . . into
the enclosure go further enclosures: one
is a two-story box with kitchen below
and bathroom-dressing room above; the
other is a four-poster, like the four-poster
around the hearth of a primitive pit
building. The hearth goes between these
posts; above it is a skylight sleeping
space over which a canvas can be low-
ered for visual privacy.”

MATERIALS AND CONSTRUCTION: The en-
closure is made with heavy barn frame
of rough 10" x 10" posts, rough 4" x 10"
girts, and 4" x 4" braces with rough
2" x 8" boards nailed vertically.

JURY COMMENTS: Clustering of houses
leaves big open spaces. . . . Holiday
houses with much personality. . . . Solid-
knit, cohesive plan.



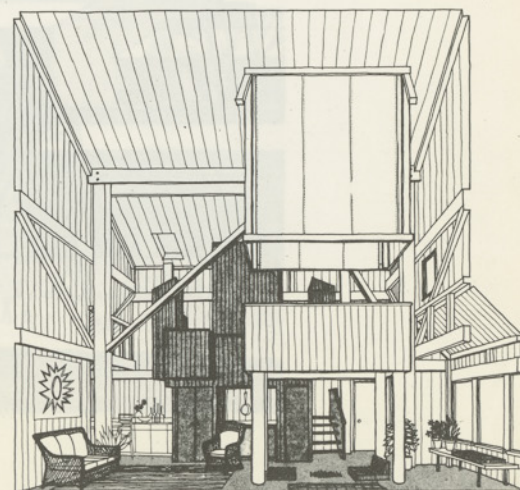
ground-floor plan of first, ten-unit cluster



UPPER FLOOR PLAN



GROUND FLOOR PLAN



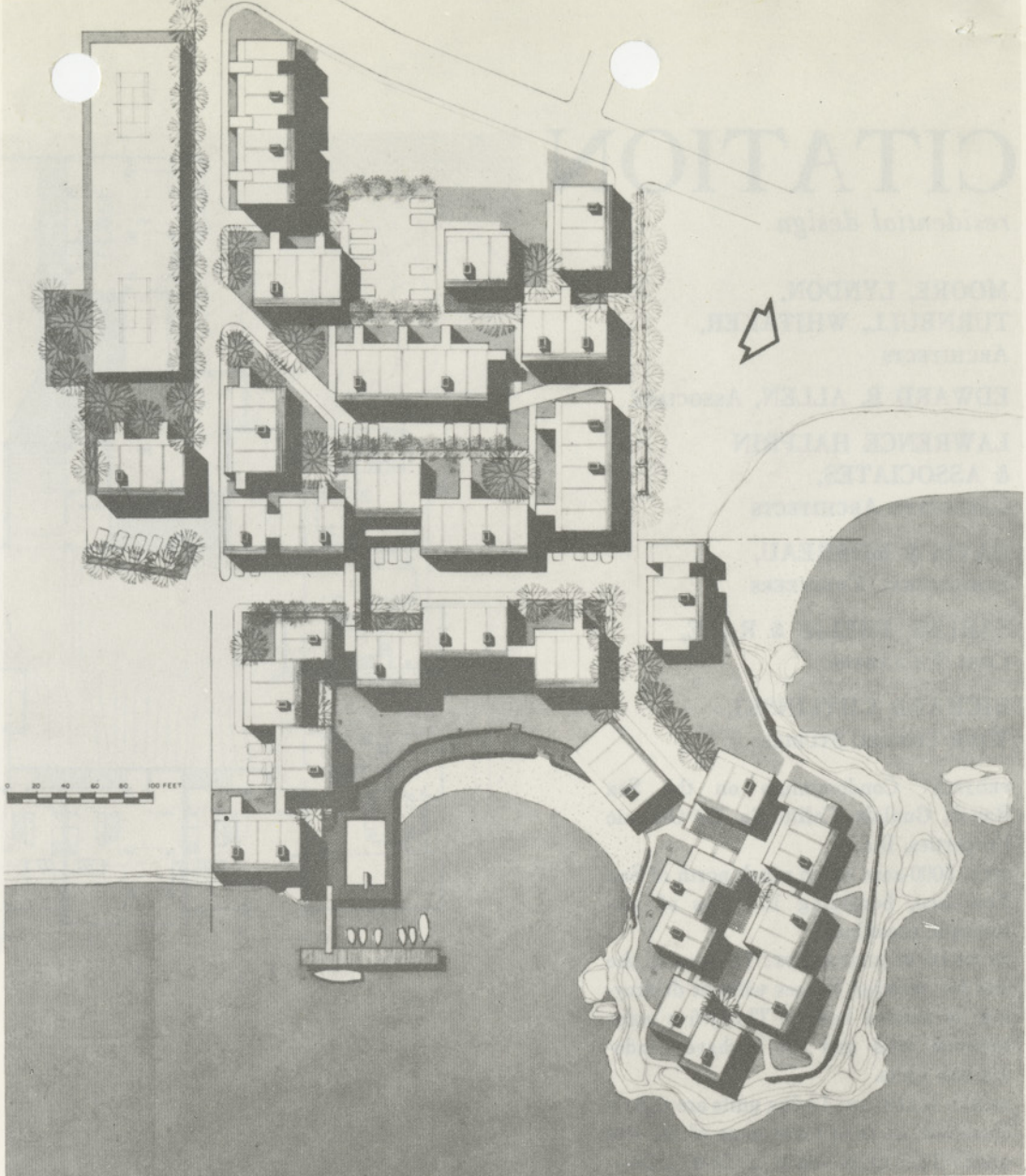
MOORE

LYNDON

TURNBULL

WHITAKER

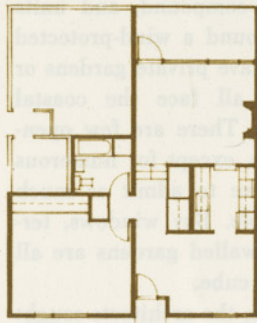
MORREAU



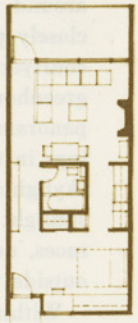
two-bedroom duplex



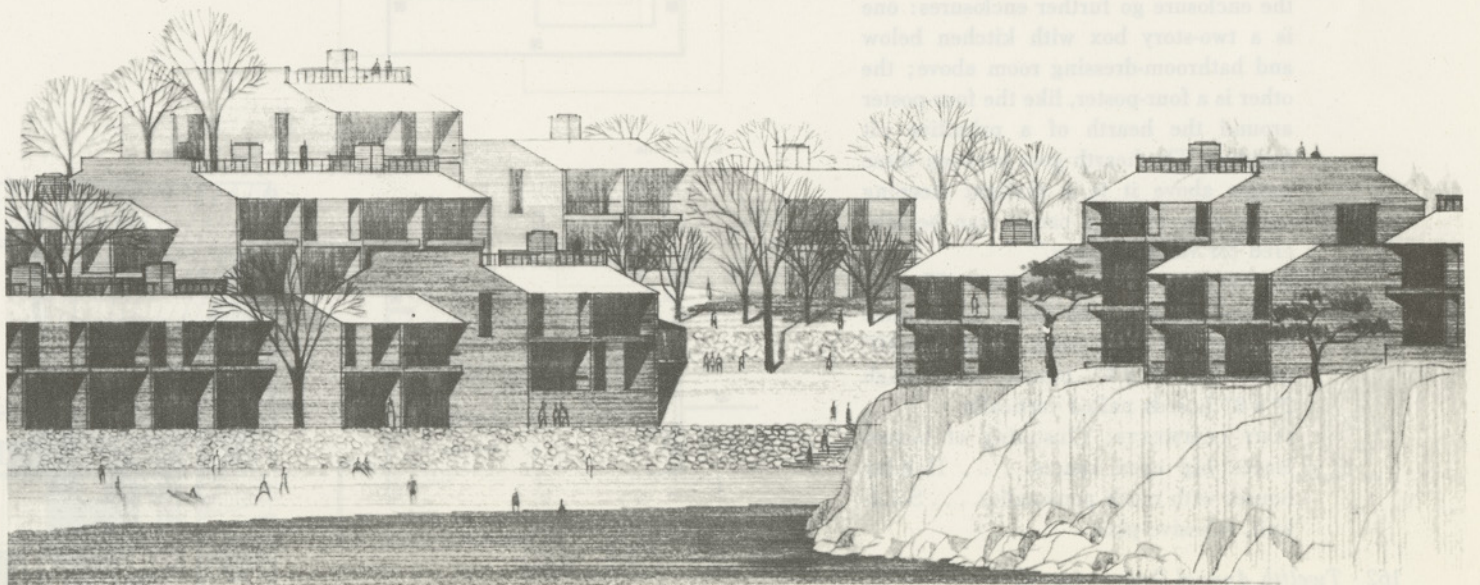
two-bedroom flat



one-bedroom flat



studio





RENDERING: MARVIN H. BUCHANAN

