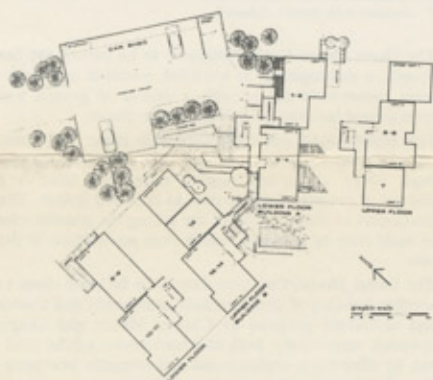
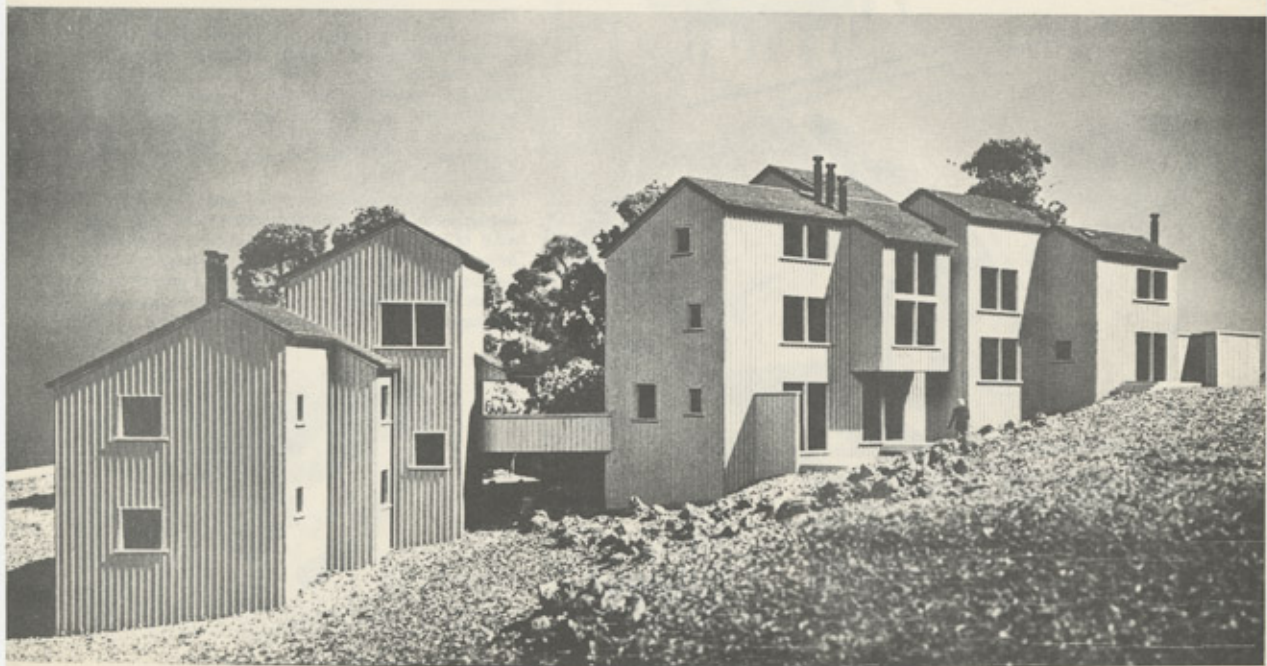


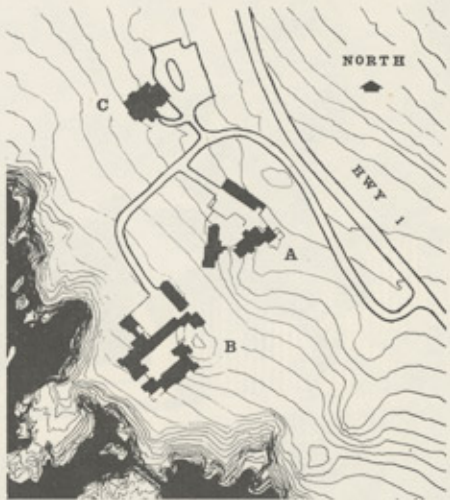
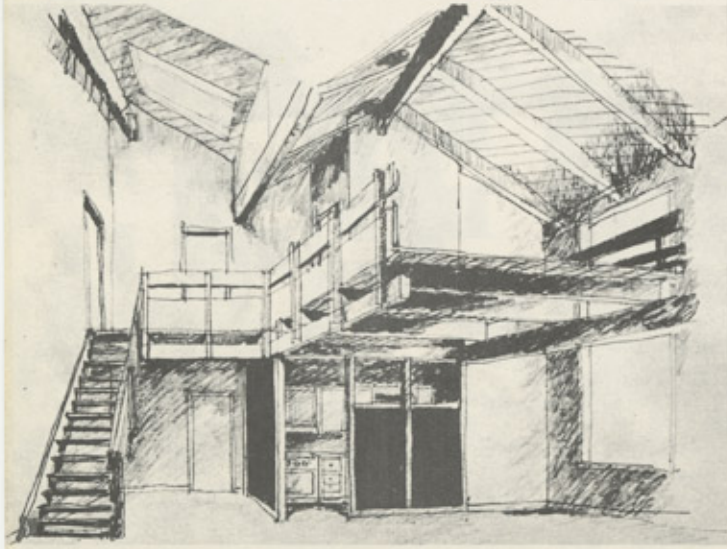
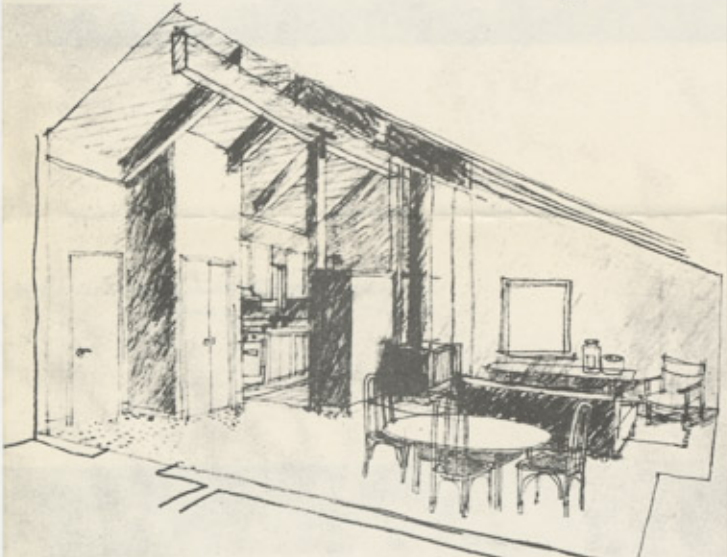
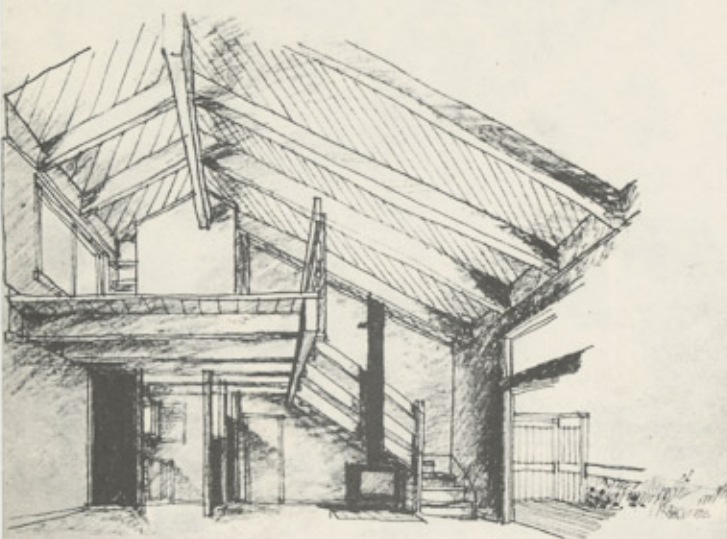
condominium



SEA RANCH GUEST HOUSE — MARQUIS & STOLLER, ARCHITECTS

*Landscape Architect: Lawrence Halprin & Associates
Engineer: Eric Elsesser & Associates*





A. guest house/condominium by Marquis & Stoller
 B. condominium by Charles Moore
 C. restaurant by Joseph Esherick

The Guest House Condominium is to be part of the Sea Ranch, a development of weekend, vacation and retirement owner-built homes with a variety of general and recreational facilities created by the developer.

The country—14 miles off California coast, 150 miles north of San Francisco—is very wild and beautiful, the coast rocky, gaunt and rugged, and inland there is a plateau of moorland which rises to redwood forests. The developers in their own work are taking the greatest care to build only in a manner which does no violence to the site.

The Guest House/Condominium is to be sited close to another building of condominium apartments and a store and restaurant designed by Charles Moore and Joseph Esherick respectively, both of whom answered the problem by adopting a sophisticated and romantic interpretation of red wood and vernacular styles.

The present design plan was arrived at after recognizing that a single-story solution would be too spread out and incohesive on the bare hillside and relate badly to the more compact adjacent buildings. It was felt that a multi-story solution would achieve a sheltered and protected feeling, and once this solution was accepted the scheme was divided into two blocks, facing (respectively) diagonally up and down the coast, but not the existing condominium below.

The blocks were stepped on a plan and elevation on the sloping site in a way which produced a romantic arrangement of partially continuous roof slopes. The car shed forms the third side of the triangular grouping in a manner that achieves an organic unity, with a progression of entries through parking court, two stair towers, eventually arriving at the lower block by means of a bridge.

